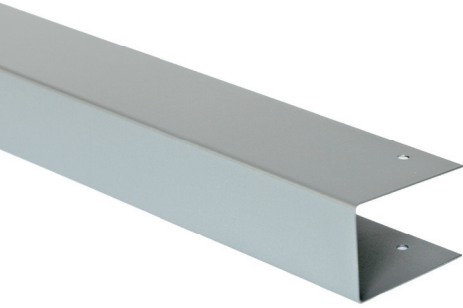
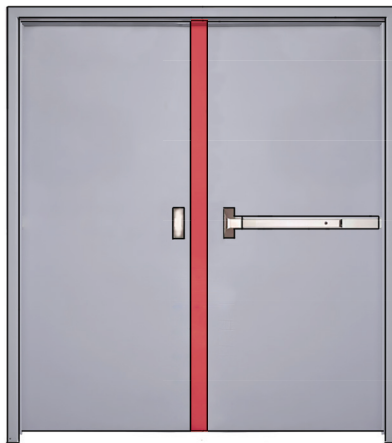
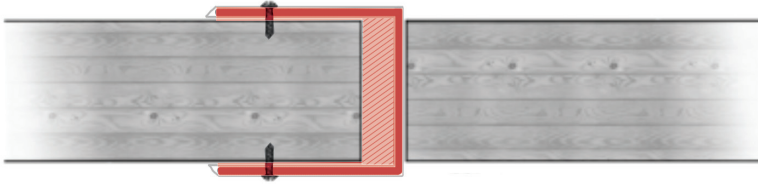


# VERTICAL FIRE DOOR EXTENSION FOR DOUBLE EGRESS STEEL DOORS

CFD-009-S



- › UL listed for up to 180 minutes on steel doors
- › UL listed for excessive clearances up to 1" between doors
- › Maintains your fire door assembly's existing fire rating
- › Tested under NFPA-252, ANSI/UL 10B with hose stream, UL 10C, CAN/ULC S104-10
- › Easy install—no door removal required
- › Fastens with screws; thru-bolts no longer required



**R27658**  
MISCELLANEOUS FIRE  
DOOR ACCESSORY