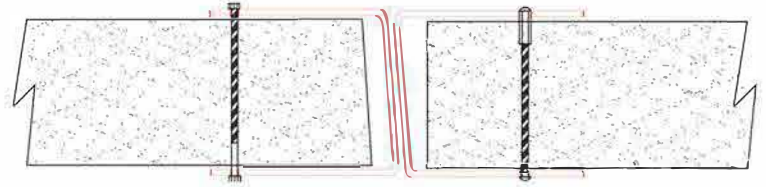
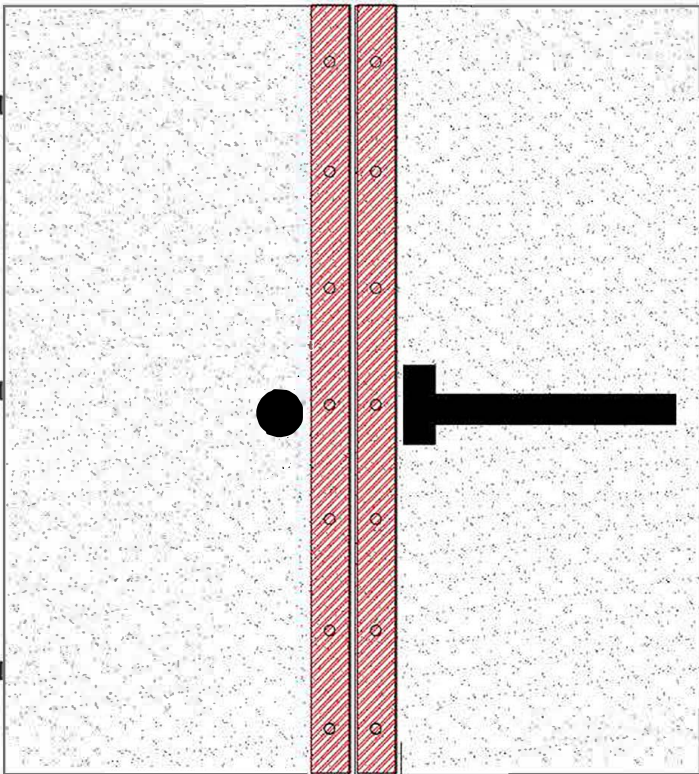




# VERTICAL FIRE DOOR EXTENSION FOR WOOD DOUBLE EGRESS DOORS



- UL Listed for Up to 180 Minutes For Steel Doors, and Up to 60 Minutes For Wood Doors.
- UL Listed for Excessive Clearances Up to 1' Between Doors.
- Does Not Increase or Decrease Your Fire Door Assembly's Existing Fire Rating.
- Tested Under NFPA-252, ANSI/UL 10B with Hose Stream, UL 10C, CAN/ULC S104-10.
- This is a Handed Product; LH/RH Active Doors, LH/RH In-Active Doors.
- Easy Installation; Does Not Require Removal of Doors.
- 2-5/8" Standard Widths, 5" Available for Concealed Vertical Rod Hardware

CFD 009-W  
CFD 009-WCH

Crown Fire Door Products, Inc.  
Sanford, Maine, USA.

[www.crownfiredoorproducts.com/](http://www.crownfiredoorproducts.com/)

US Patent Nos. 9,151,106 & 9,518,422  
Canadian Patent Nos. 2,846,726 & 2,939,255



**R27658**  
MISCELLANEOUS FIRE  
DOOR ACCESSORY