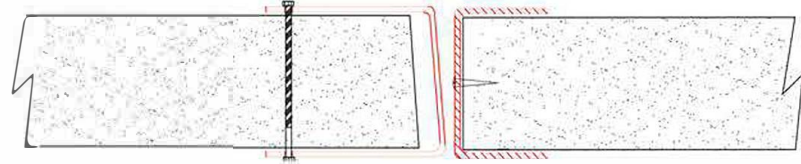
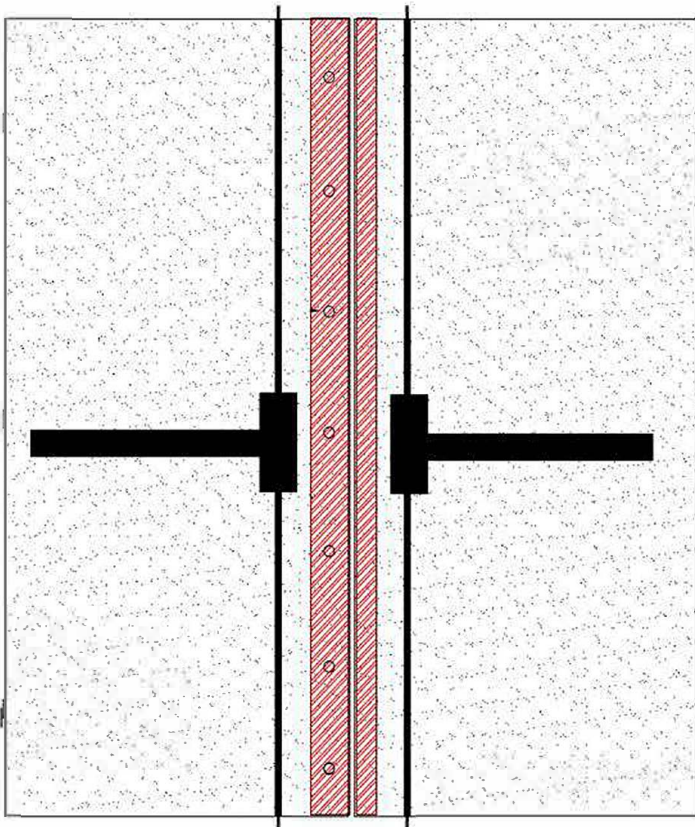




VERTICAL FIRE DOOR EXTENSION FOR PAIRED EGRESS WOOD DOORS



- UL Listed For Up to 60 Minutes on Wood Composite Doors
- UL Listed for Excessive Clearances Up to 1" Between Doors.
- Does Not Increase or Decrease Your Fire Door Assembly's Existing Fire Rating.
- Tested Under NFPA-252, ANSI/UL 10B with Hose Stream, UL 10C, CAN/ULC S104-10.
- Easy Installation; Does Not Require Removal of Doors.
- Concealed Vertical Rod Hardware Requires Two 5" Extensions.

CFD 007-W
CFD 007-WCH

Crown Fire Door Products, Inc.
Sanford, Maine, USA.

www.crownfiredoorproducts.com/
US Patent Nos. 9,151,106 & 9,518,422

Canadian Patent Nos.
2,846,726 & 2,939,255



R27658
MISCELLANEOUS FIRE
DOOR ACCESSORY